

# HOW TO PLACE DESTINY BARCODES ON MUSICAL INSTRUMENTS

---

BY JOSEPH YUNE

## 2 TABLE OF CONTENTS

---

- **Destiny Barcode Information -----Slide 3**
- **General Rules for Placing Barcodes -----Slide 9**
- **Individual Instrument Slides -----Slide 11**
- **Questions -----Slide 38**

### 3 DESTINY BARCODE INFORMATION P.I

---



1/2"

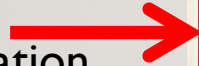
2"



## 4 DESTINY BARCODE INFORMATION P.2

---

5 Digit School  
Name Abbreviation





## 5 DESTINY BARCODE INFORMATION P.3

---



"2" for Music  
Instruments

## 6 DESTINY BARCODE INFORMATION P.4

---



School  
Location Code



## 7 DESTINY BARCODE INFORMATION P.5

---



“M” stands for Music



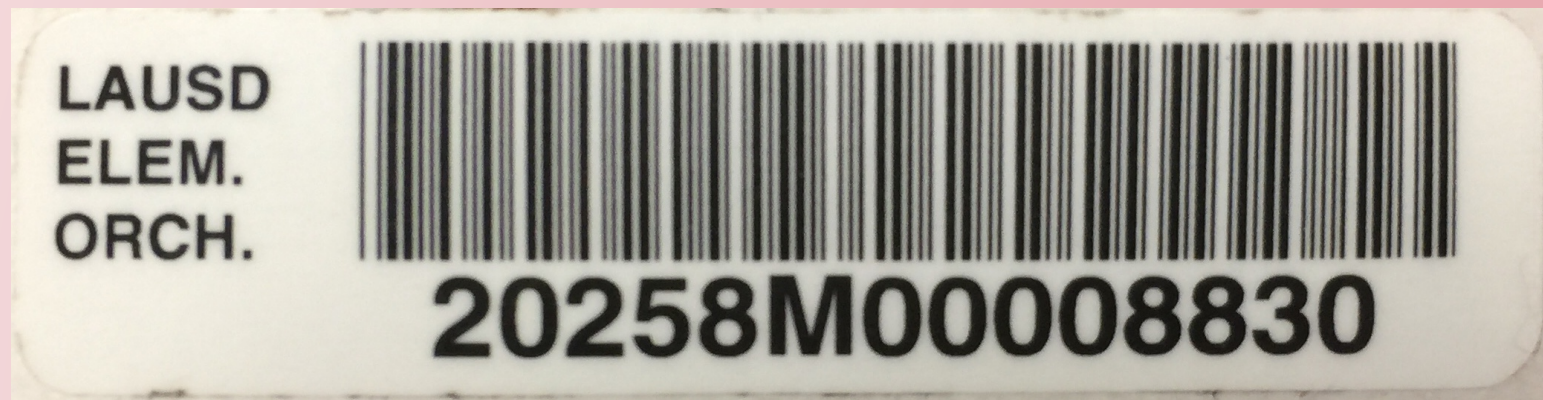
## 8 DESTINY BARCODE INFORMATION P.6

---



8 Digit  
Serial Number

## 9 DESTINY BARCODE ADDITIONAL TAPE

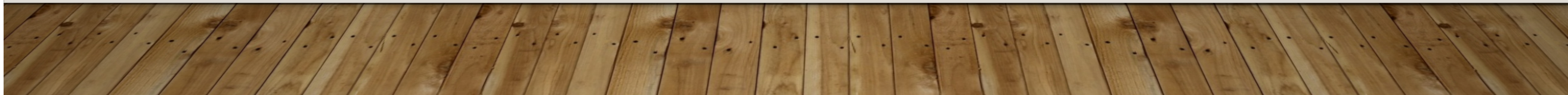




## **10 GENERAL RULES FOR PLACING DESTINY BARCODES ON INSTRUMENTS AND CASES**

---

- **Place barcodes easily accessible, but away from frequent handling areas and line of sight (some students might take the barcodes off the instrument)**
- **Do not place barcodes over any information on the instrument (e.g. serial numbers, brand names, school engravings, etc.)**
- **Clean the surface thoroughly and wait for it to dry completely before placing the barcode sticker on the instrument (on a smooth surface)**
- **Place the additional tape (prescription tape) over the Destiny barcode for added support (Additional tape dimension 1" x 3")**
- **Barcodes should not get in the way of the instrument functioning properly**





## II FLUTE

---

- On the Body Joint as shown

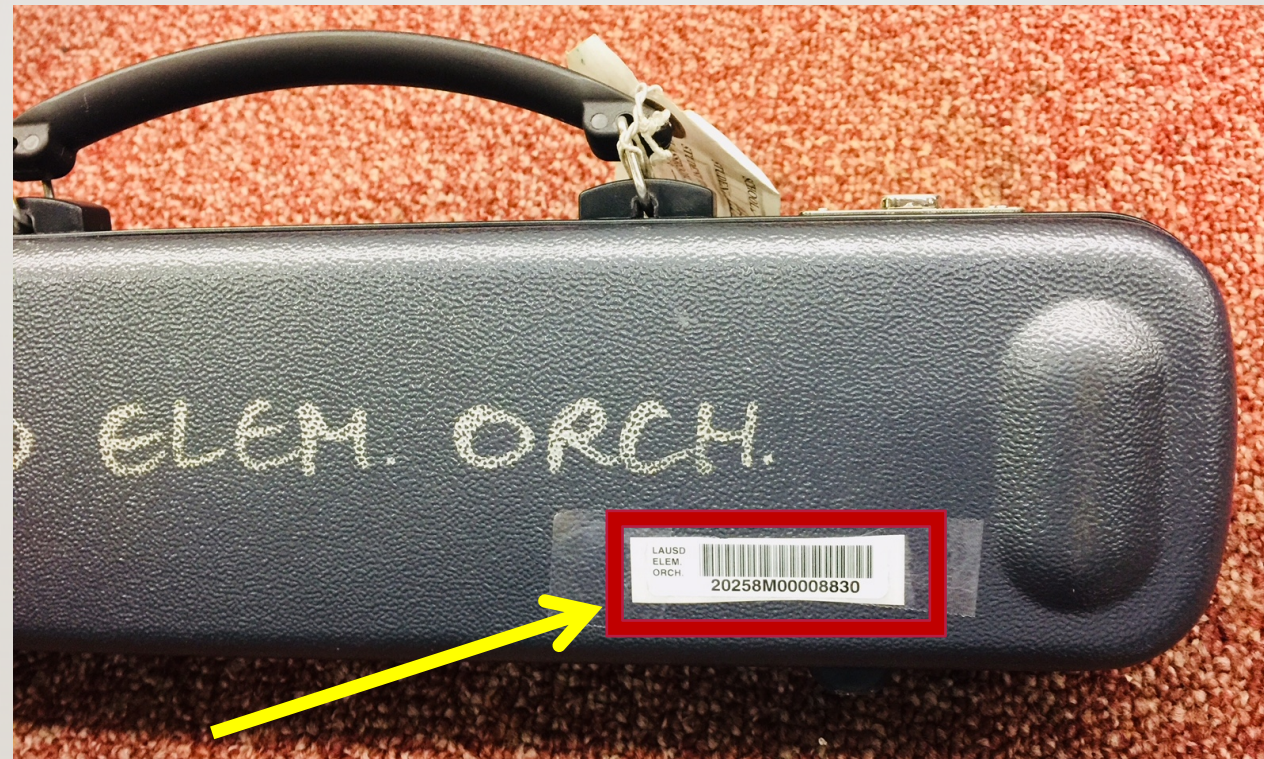




## 12 FLUTE CASE

---

- On the bottom right as shown





# 13 OBOE

---

- **Approximately 2 inches below the thumb rest as shown**





## 14 OBOE CASE

---

- On the bottom right as shown





# 15 CLARINET

---

- Approximately 1-1/2 inches below the thumb rest as shown





## 16 CLARINET CASE

---

- On the bottom right as shown





## 17 SAXOPHONE

---

- Approximately 1-1/2 inches below the left thumb rest between the keys as shown





## 18 SAXOPHONE CASE

---

- On the bottom right as shown





# 19 BARITONE SAXOPHONE

---

- **Approximately 2-1/2 inches below the left thumb rest between the keys as shown**

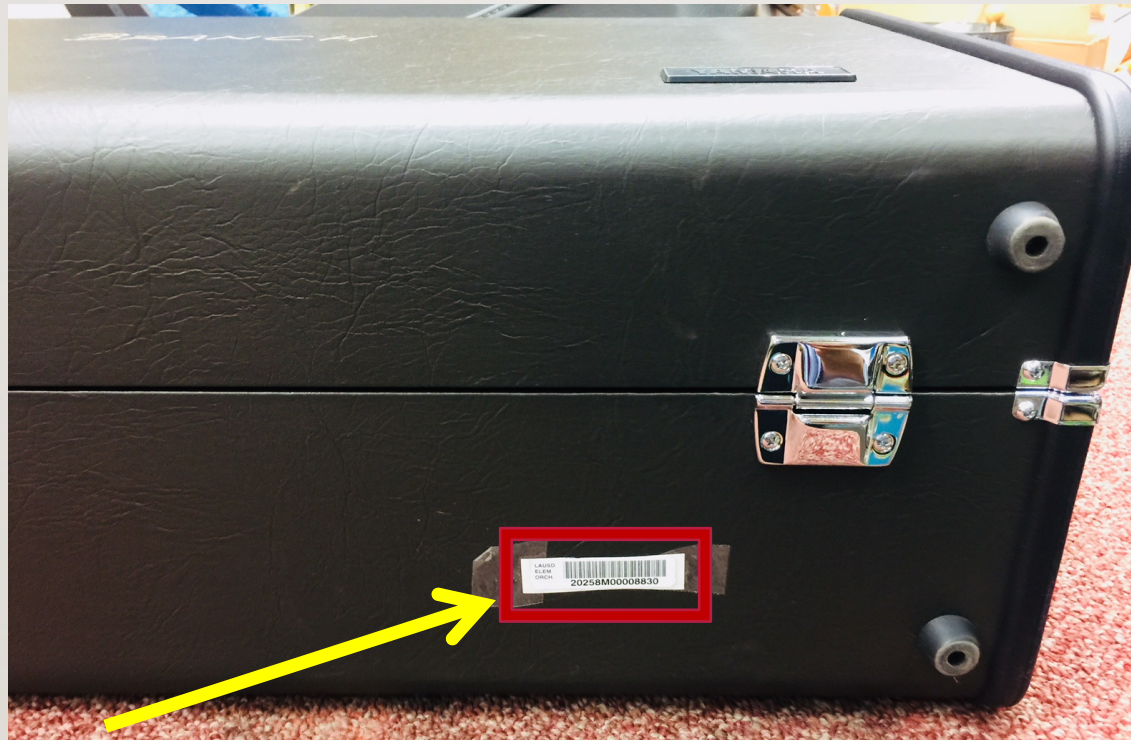




## 20 BARITONE SAXOPHONE CASE

---

- On the bottom right as shown

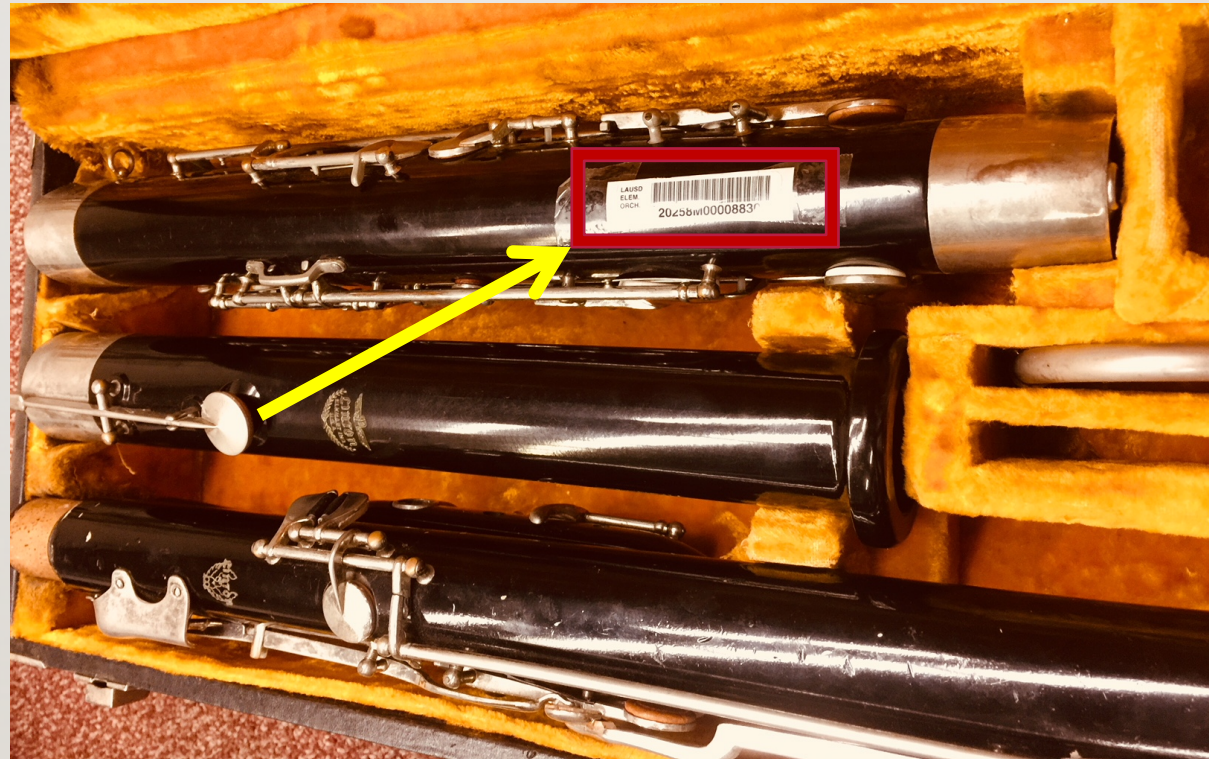




## 21 BASSOON

---

- On the Boot Joint as shown





## 22 BASSOON CASE

---

- On the bottom right as shown





## 23 FRENCH HORN

---

- On the Bell as shown





## 24 FRENCH HORN CASE

---

- On the bottom right as shown





## 25 CORNET/TRUMPET

---

- On the rear part of the **Bell** as shown





## 26 CORNET/TRUMPET CASE

---

- On the bottom right as shown

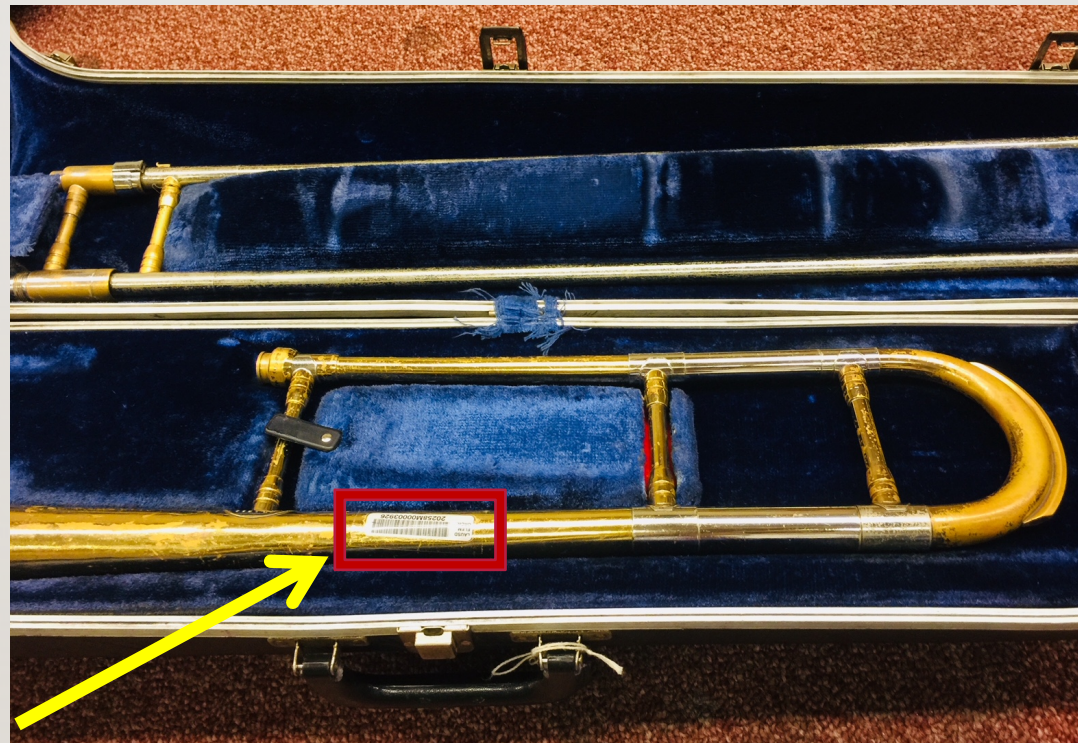




## 27 TROMBONE

---

- On the middle part of the **Bell** as shown





## 28 TROMBONE CASE

---

- On the bottom right as shown





## 29 EUPHONIUM/BARITONE/TUBA

---

- On the middle part of the **Bell** as shown





## 30 EUPHONIUM/BARITONE/TUBA CASE

---

- On the bottom right as shown





## 31 SOUSAPHONE

---

- On the main body part of the instrument as shown





## 32 SOUSAPHONE CASE

---

- On the bottom right as shown





## 33 VIOLIN/VIOLA

---

- On the bottom side, opposite of the chin rest as shown





## 34 VIOLIN/VIOLA CASE

---

- On the bottom right, toward the front as shown





## 35 CELLO/DOUBLE BASS

---

- On the bottom side, right of the endpin as shown





## 36 GUITAR/UKULELE

---

- On the bottom side, right of the endpin as shown





## 37 DRUMS/KEYBOARDS/ETC.

---

- Close to the brand name without covering up information as shown





## 38 QUESTIONS?

---

- **Arts Education Branch:**
  - Joseph Yune ([jty9169@lausd.net](mailto:jty9169@lausd.net)) 213-241-3368
  - Christopher Rodriguez ([chris.j.rodriguez@lausd.net](mailto:chris.j.rodriguez@lausd.net)) 213-241-5529